

Application Note

Omron PLC and CX-Programmer



This document guides you through the setup of proprietary vendor specific software installed on your PC. Your supervisor may provide you with additional or alternative instructions.

The document consists of standard instructions that may not fit your particular solution. Please visit our support website for latest revisions of documentation and firmware:

<http://www.secomea.com>

Version: 1.0, November 2009



Table of Contents

1.	Prerequisite for this guide	3
2.	Logon the LinkManager	4
3.	Click and Choose in the LinkManager	4
4.	Online with Omron and CX-Programmer	5
5.	Notices	8

1. Prerequisite for this guide

The following guide will assist you to setup a remote and online connection to the equipment placed on the customer site using your proprietary vendor specific software installed on your PC. A prerequisite for this guide is:

1. You have an operational LinkManager installed on your PC and you are able to see the vendor specific equipment.
2. You have the proprietary vendor specific software installed on your PC.
3. You have the Omron device agent installed and configured on the SiteManager at the remote site.

If this is not the case, we kindly ask you to contact the person / department responsible within your own company or at the company responsible hereof.

System overview

The Remote Device Management system is a complete end-to-end solution for easy and secure remote access, monitoring and management of industrial equipment for the automation- and machine builder industry.

The Remote Device Management solution enables machine builders, service providers and end-users to instantly access, monitor, and manage machines and equipment remotely and effectively over secure high speed internet connections.

The following system overview is with a SiteManager 3034 or 3134 at the customer location:

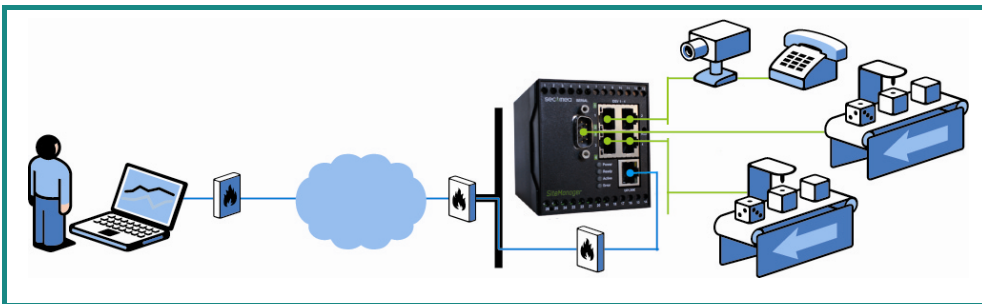


Figure 1 - System overview

2. Logon the LinkManager

This describes how to logon your LinkManager software. If you are already logged on, please go to number 3.

1. Start the LinkManager from the START > Programs > Secomea Link-Manager.
2. Select Console menu from the LinkManager Tray Icon menu.
3. Login uses the GateManager certificate and password which is obtained from your GateManager administrator. Then please click **Login**.

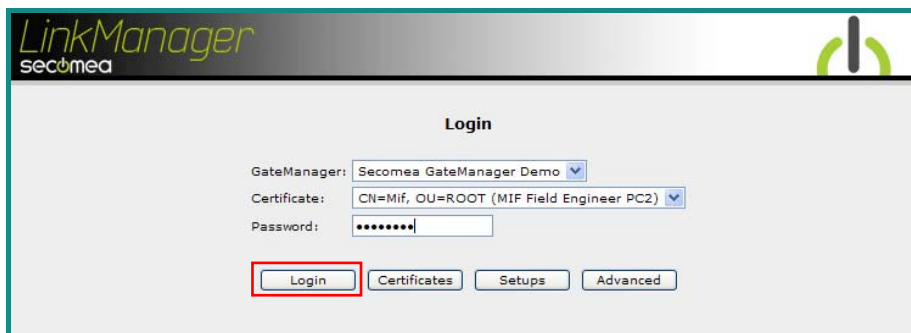


Figure 2 LinkManager login Screen

3. Click and Choose in the LinkManager

This describes how to click and choose the device you wish to get online with. If you are already online, please go to number 4.

1. Click **<Connect all>** to connect to all devices or click a specific device to connect to only this single device:

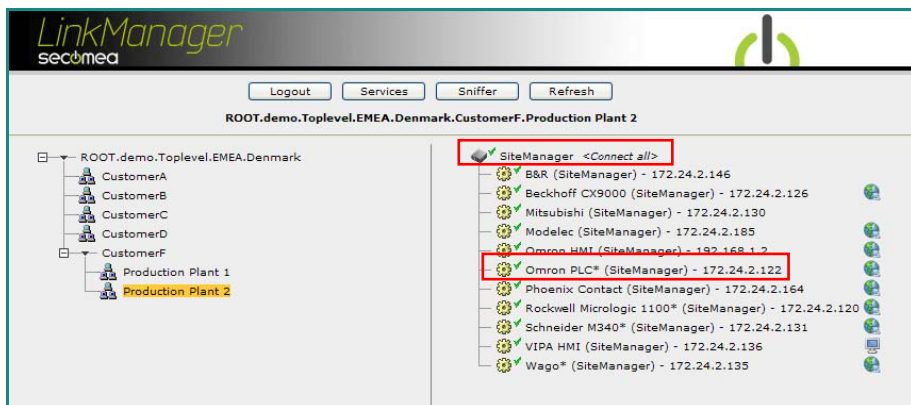


Figure 3 LinkManager Screen (example) Access to all devices or to a single device

4. Online with Omron and CX-Programmer

Get online with your CX-One:

1. Start CX-One
2. Start CX-Programmer

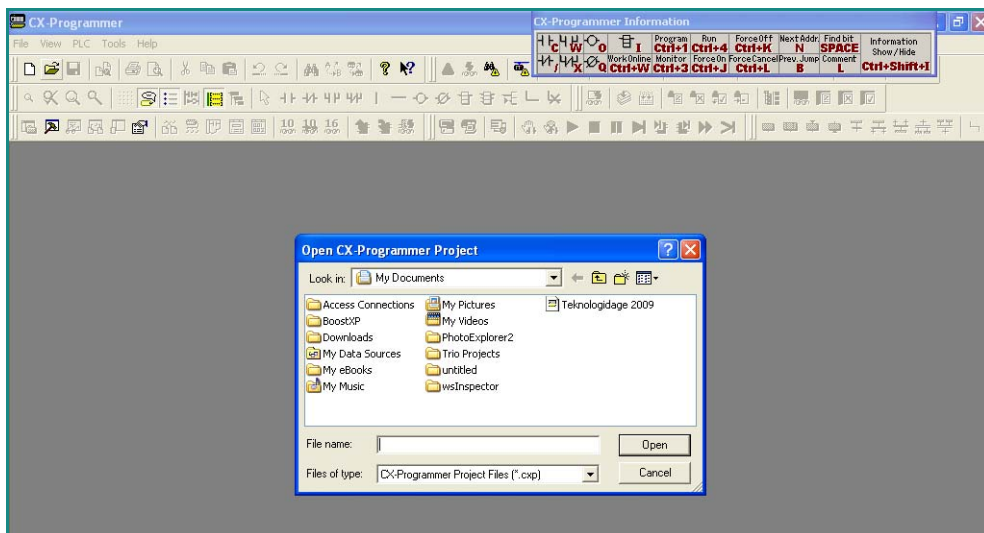


Figure 4 CX-Programmer Screen – Open project

3. Choose your project
4. Press Open

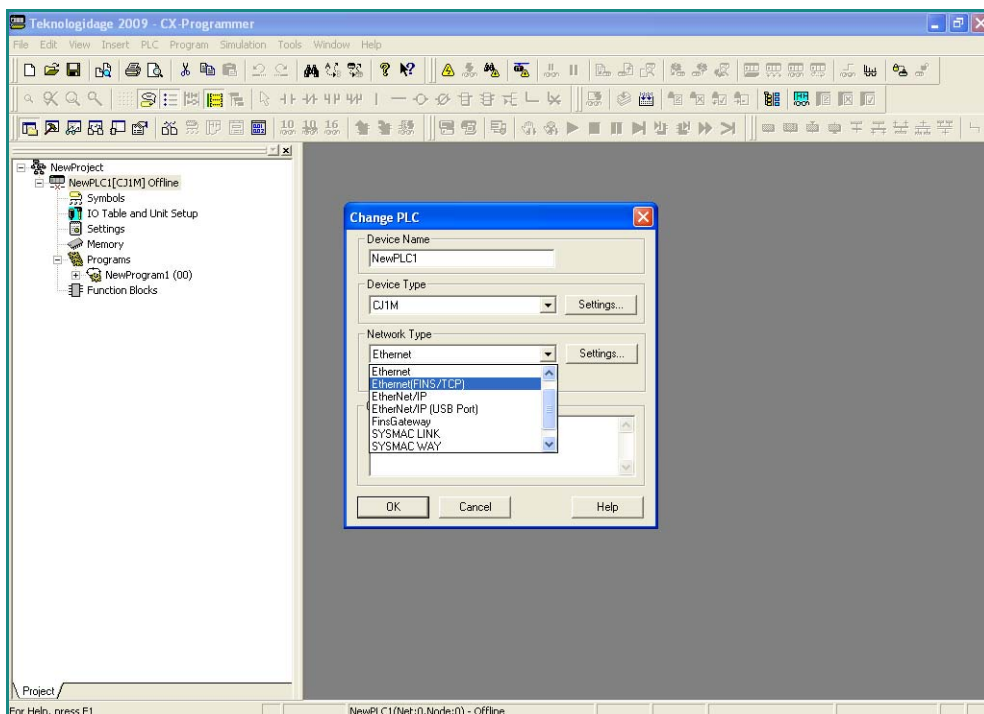


Figure 5 CX-Programmer Screen

5. Click twice on the CPU – in the screen “NewPLC[CJ1M] Offline”
6. Choose the Network Type >> Ethernet(FINS/TCP) <<

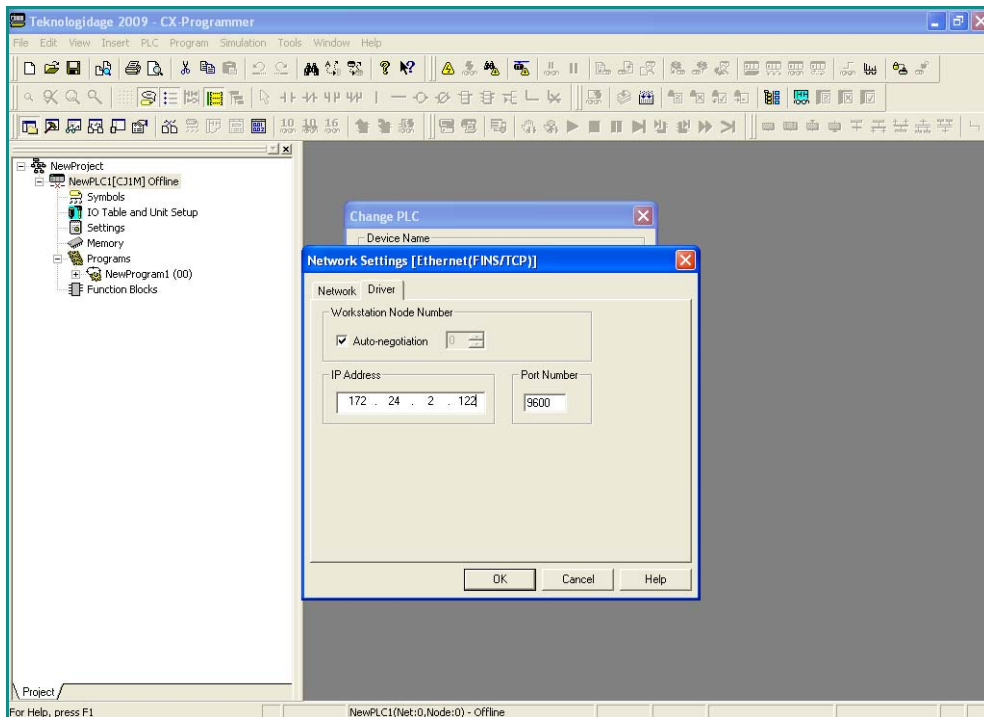


Figure 6 CX-Programmer Screen

7. Click >> Settings << and >> Driver <<
8. Specify the Target PLC IP address
9. Click OK

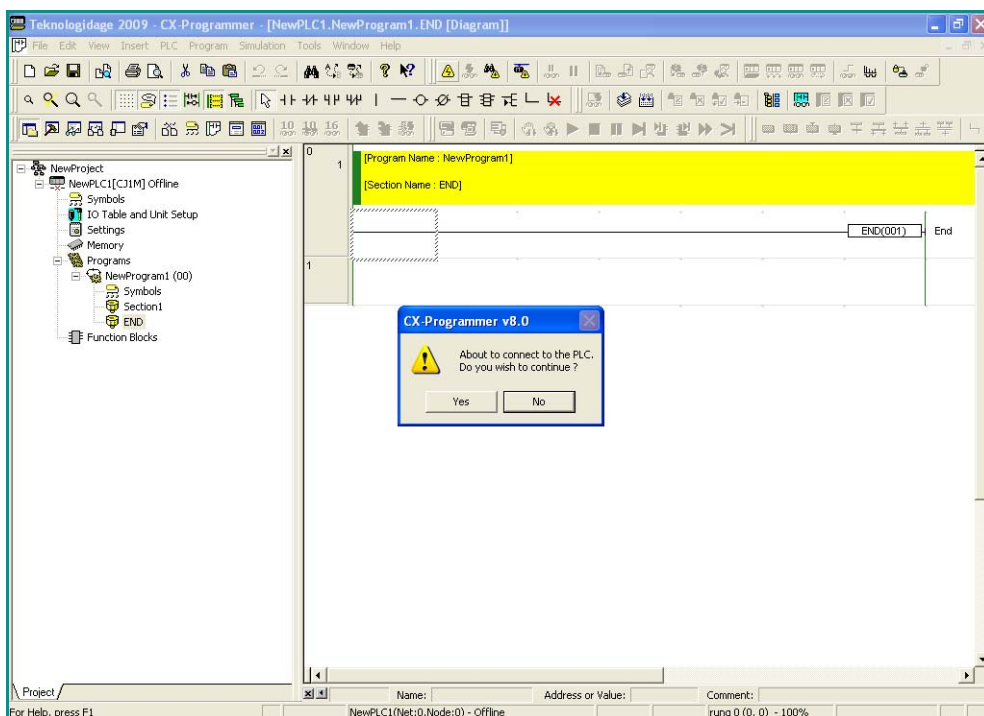


Figure 7 CX-Programmer – Connect to the PLC

10. Click on >> Work Online <<
11. Press Yes

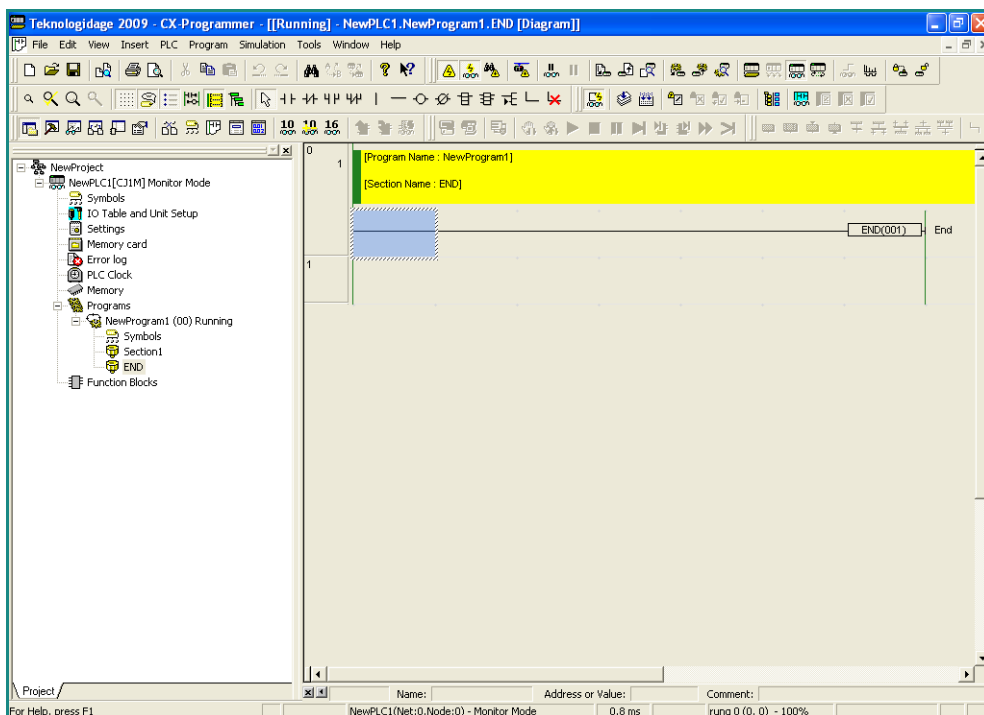


Figure 8 CX-Programmer - Online

12. You are now online with the PLC

5. Notices

Publication and copyright

Omron and CX-Programmer, Version 1.0, November 2009

© **Copyright Secomea A/S 2009.** All rights reserved. You may download and print a copy for your own use. As a high-level administrator, you may use whatever you like from contents of this document to create your own instructions for deploying our products. Otherwise, no part of this document may be copied or reproduced in any way, without the written consent of Secomea A/S. We would appreciate getting a copy of the material you produce in order to make our own material better and – if you give us permission – to inspire other users.

Trademarks

TrustGate™ is trademark of Secomea A/S. Other trademarks are the property of their respective owners.

Disclaimer

Secomea A/S reserves the right to make changes to this publication and to the products described herein without notice. The publication of this document does not represent a commitment on the part of Secomea A/S. Considerable effort has been made to ensure that this publication is free of inaccuracies and omissions but we can not guarantee that there are none.

The following paragraph does not apply to any country or state where such provisions are inconsistent with local law:

SECOMEA A/S PROVIDES THIS PUBLICATION "AS IS" WITHOUT WARRANTY OF ANY KIND, EITHER EXPRESS OR IMPLIED, INCLUDING, BUT NOT LIMITED TO, THE IMPLIED WARRANTIES OF MERCHANTABILITY OR FITNESS FOR A PARTICULAR PURPOSE

Secomea A/S shall not be liable for any direct, indirect, incidental, consequential, or other damage alleged in connection with the furnishing or use of this information.

Secomea A/S
Denmark

CVR No. DK 31 36 60 38

E-mail: sales@secomea.com
www.secomea.com